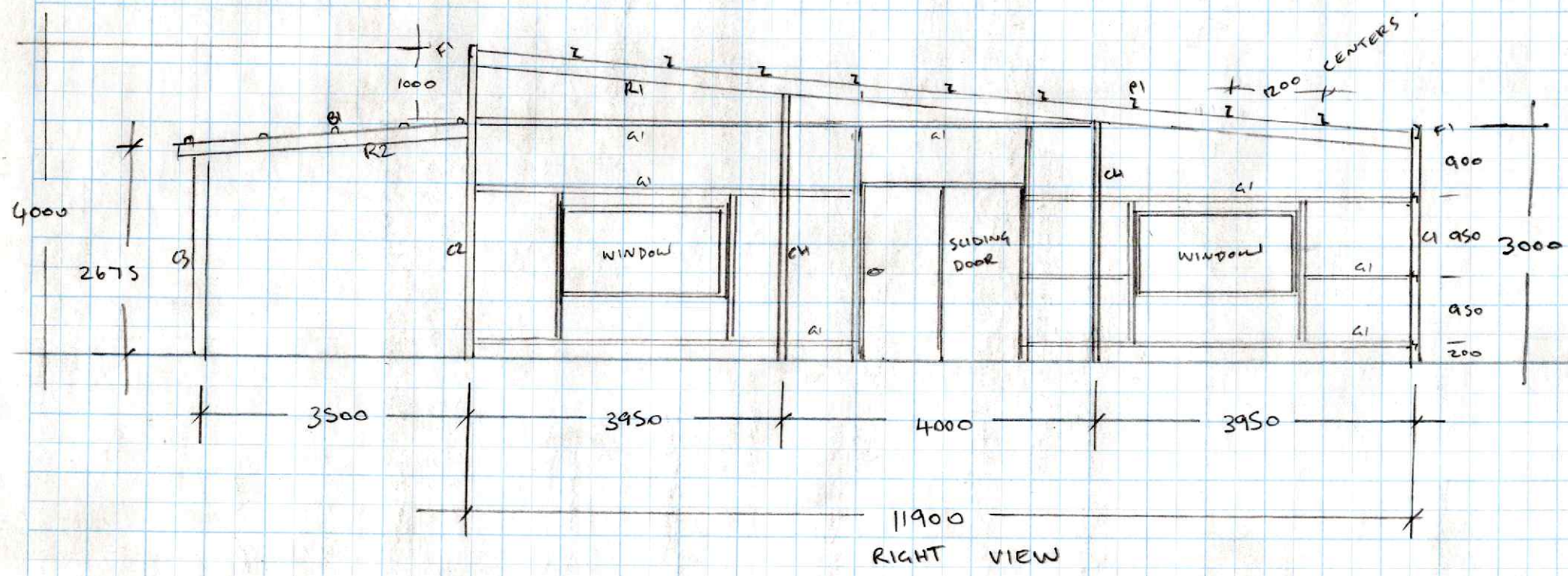


LEFT VIEW



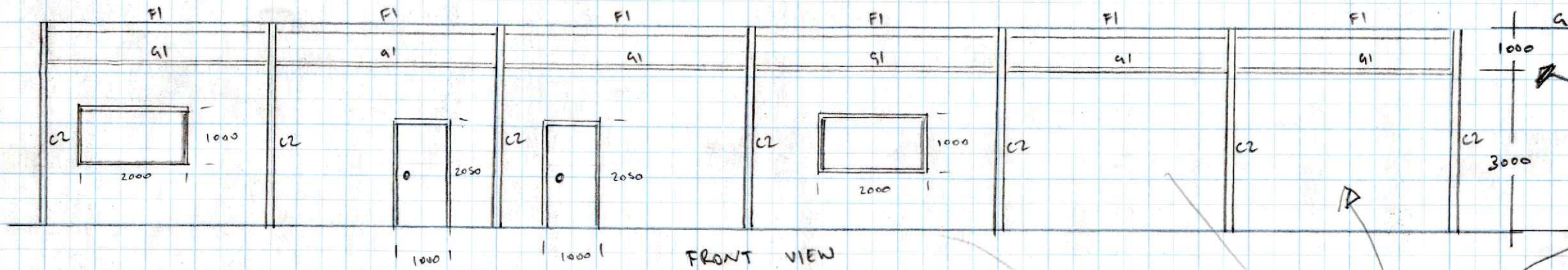
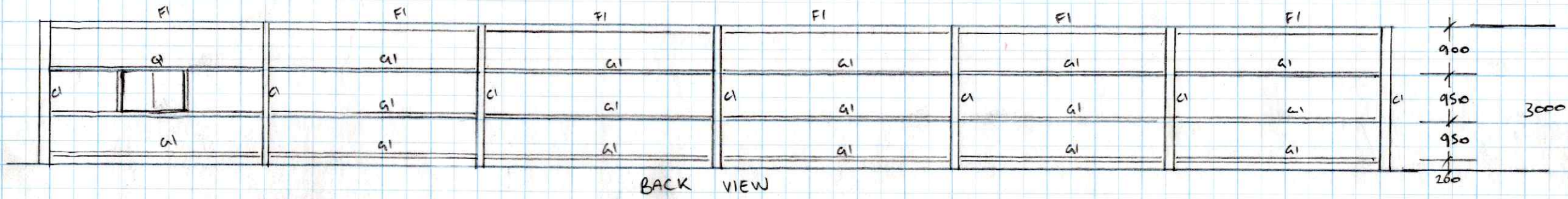
RIGHT VIEW

- R1 - RAFTER - C35030
 - R2 - LEANTO RAFTER - 152 x 50 TIMBER
 - C1 - C2 COLUMNS - 100x100 x 4 SHS
 - C3 LEAN TO COLUMN - 150x150 TIMBER
 - F1 FASCIA C15019
 - P1 ROOF PURLIN Z10019
 - G1 WALL GIRT Z10019
 - RJ1 R DOOR JAM C20019
 - C4 GABLE COLUMN 75x75 x 4 SHS
- JAMS AROUND DOORS + WINDOW 119 CHANNEL

GABLE WALLS - BACK WALL + ROOF CORRI
 SHEETED WITH .42 CORRI .42 CORRI
 + AIR CELL INSULATION
 CORRI CLADDING ON INSIDE WALLS
 CEILING SHEETED WITH .42 CORRI

FOOTING - FRAME TO BE STOOD
 UP IN HOLES 900 Ø 1M DEEP

SLAB - 100mm

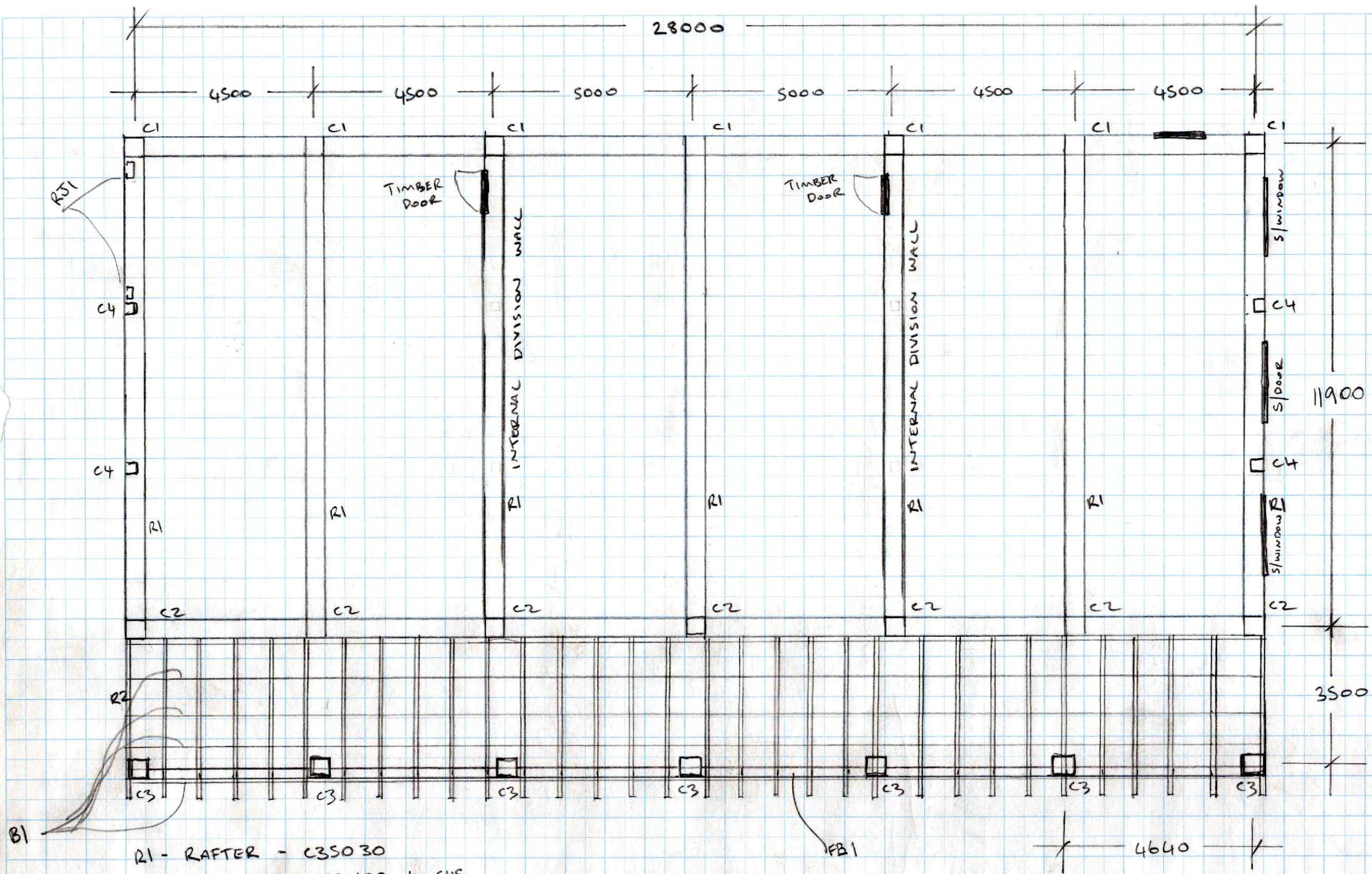


C1 - C2 COLUMNS 100x100x4 SHS
 F1 FASCIA C15019
 G1 WALL GIRTS 210019

TIMBER CLADDING ON FRONT
 WALL UNDER LEAN TO FIXED TO
 STUD FRAME

FRONT WALL - 28m x 3m
 ALL TIMBER STUD FRAME
 90x35 TREATED PINE
 @ 450 CENTERS

TOP ABOVE LEAN TO WILL
 BE .42 CORR1



R1 - RAFTER - C35030

C1, C2 COLUMN - 100x100x4 SHS

C4 GABLE COLUMN - 75x75x4 SHS

C3 LEAN TO COLUMN - 150x150 JARRAH POSTS @ 4640 CENTERS.

R2 - LEAN TO RAFTERS - 152x50 JARRAH @ 900 CENTERS.

FB1 - LEAN TO FASCIA/BEARER 203x50 JARRAH

B1 - LEAN TO BATTENS 100x50 JARRAH @ 900 CENTERS.

INTERNAL DIVISION WALLS TO BE
TIMBER STUD FRAME