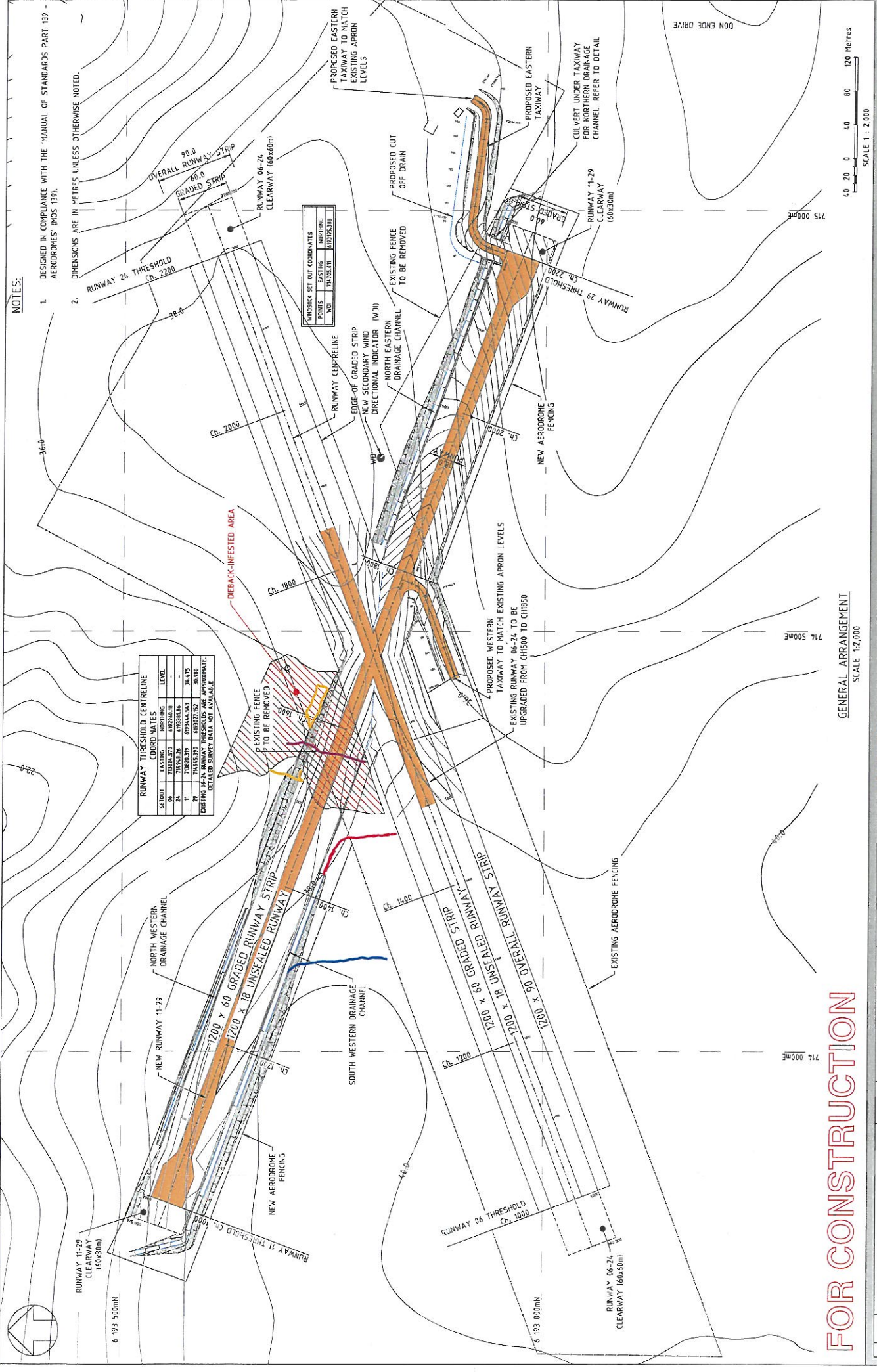


9.3.2 a) Bremer Bay Airstrip - Drawing No. BMR-181-DR-001



NOTES:

- DESIGNED IN COMPLIANCE WITH THE 'MANUAL OF STANDARDS PART 139 - AERODROMES' (MOS 139).
- DIMENSIONS ARE IN METRES UNLESS OTHERWISE NOTED.

STATION	EASTING	NORTHING	LEVEL
06	487824.578	4978463.8	-
24	474842.26	4978318.8	-
11	470828.319	4978444.593	34.975
29	474842.26	4978318.8	38.970
23	474842.26	4978318.8	38.970
29	474842.26	4978318.8	38.970

EXISTING DATA FROM AIR PHOTOGRAPHIC  
DETAILED SURVEY DATA NOT AVAILABLE

UNITS	SET OUT COORDINATES	EXISTING POINTS	NORTHING	EASTING
M	1	1	1079253.98	1079253.98

**FOR CONSTRUCTION**

GENERAL ARRANGEMENT  
SCALE 1:2,000

SCALE 1 : 2,000  
0 20 40 80 120 Metres

TITLE <b>BREMER BAY AERODROME WESTERN AUSTRALIA PROPOSED CROSS RUNWAY GENERAL ARRANGEMENT</b>		SCALE 1:2,000 @ A1	
DRAWN CHECKED DESIGNED APPROVED	DATE 21/12/18 22/02/19 14/12/18 14/02/19	BY R.D. S.H. J.G.	REV 0 BMR-181-DR-001
CLIENT  AMS AERODROME MANAGEMENT SYSTEMS PTY LTD 100 WILSON STREET, BREMER BAY, WA 6156 PHONE: 08 9771 8771, FAX: 08 9771 8772, EMAIL: info@ams.com.au WEBSITE: www.ams.com.au ALL RIGHTS RESERVED IN THIS DOCUMENT IS RESERVED. PROCEEDING INFORMATION TO ANY OTHER PERSON OR ENTITY WITHOUT WRITTEN PERMISSION IS STRICTLY PROHIBITED.			
REFERENCE DRAWING DRE NO. 72-28a-24 - 02/13/18 PH 6 193 500mm 6 193 000mm			