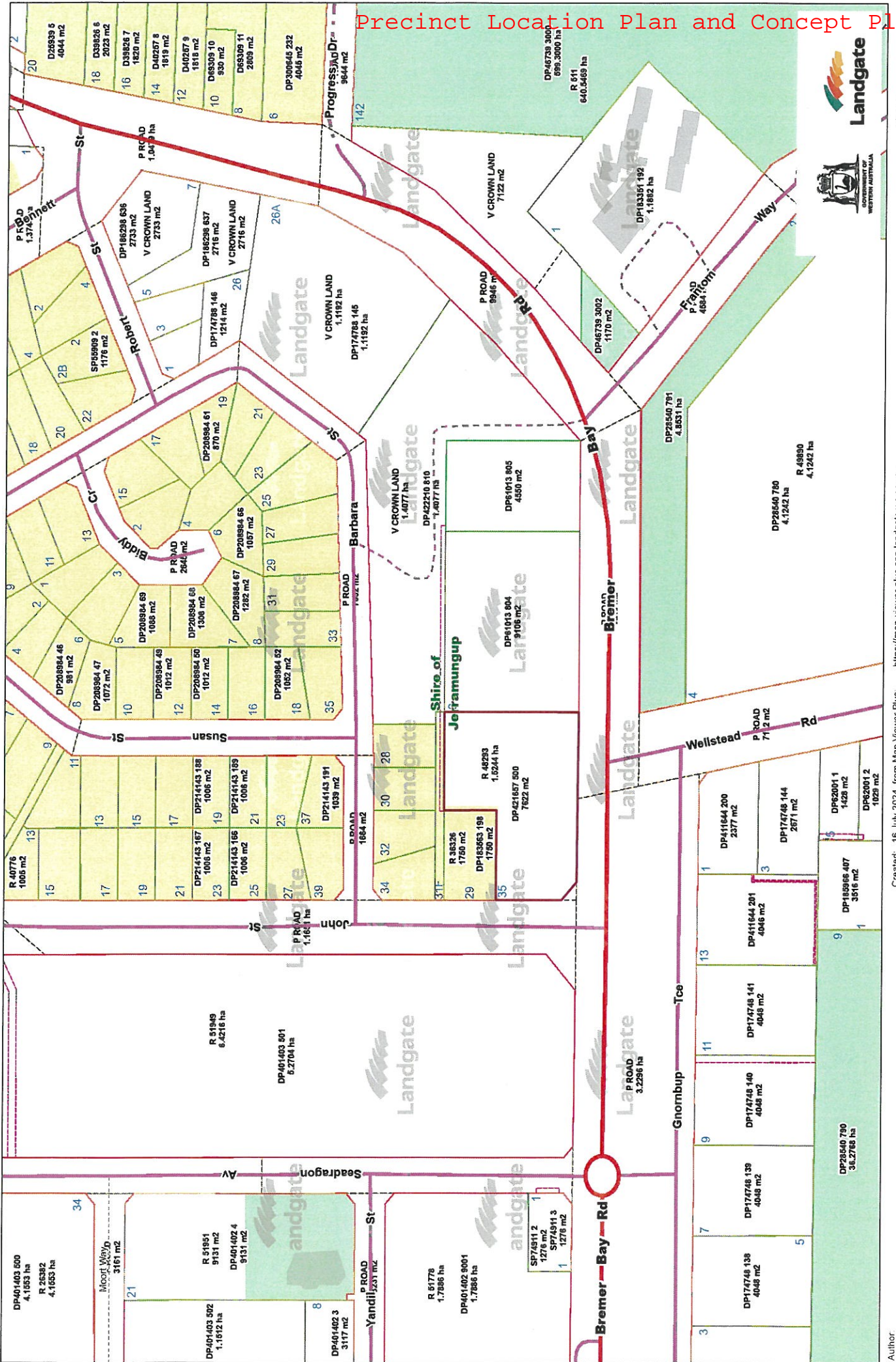


9.3.1 a) Bremer Bay Emergency Services

Precinct Location Plan and Concept Plan

Reserve 48293 - 35 JOHN STREET, BREMER BAY.



Created: 16 July 2024 from Map Viewer Plus. <https://map-viewer-plus.app.landgate.wa.gov.au>

Author

© Copyright, Western Australian Land Information Authority. No part of this document or any content appearing on it may be reproduced or published without the prior written permission of Landgate. Disclaimer: The accuracy and completeness of the information on this document is not guaranteed and is supplied by Landgate as is with no representation or warranty as to its reliability, accuracy, completeness, or fitness for purpose. Please refer to original documentation for all legal purposes.

Administrative Boundary

Local Government

Roads

Proposed Roads

Laneway, Tracks

Tracks

Minor Roads

Minor

Minor Unsealed

Freeways, Highways & Main Roads (L)

Main

Cadastral

Boundary Lines

Road Boundary - Surveyed

Construct

Internal Boundary - Unsurveyed

Internal Boundary - Surveyed

Easement Boundary - Unsurveyed

Easement Boundary - Surveyed

House Numbers (256K)

House Numbers (64K)

House Numbers (16K)

House Numbers (4K)

Lot on Plan - Boundaries (4K)

Property Information (256K)

Property Information (64K)

Property Information (16K)

Property Information (4K)

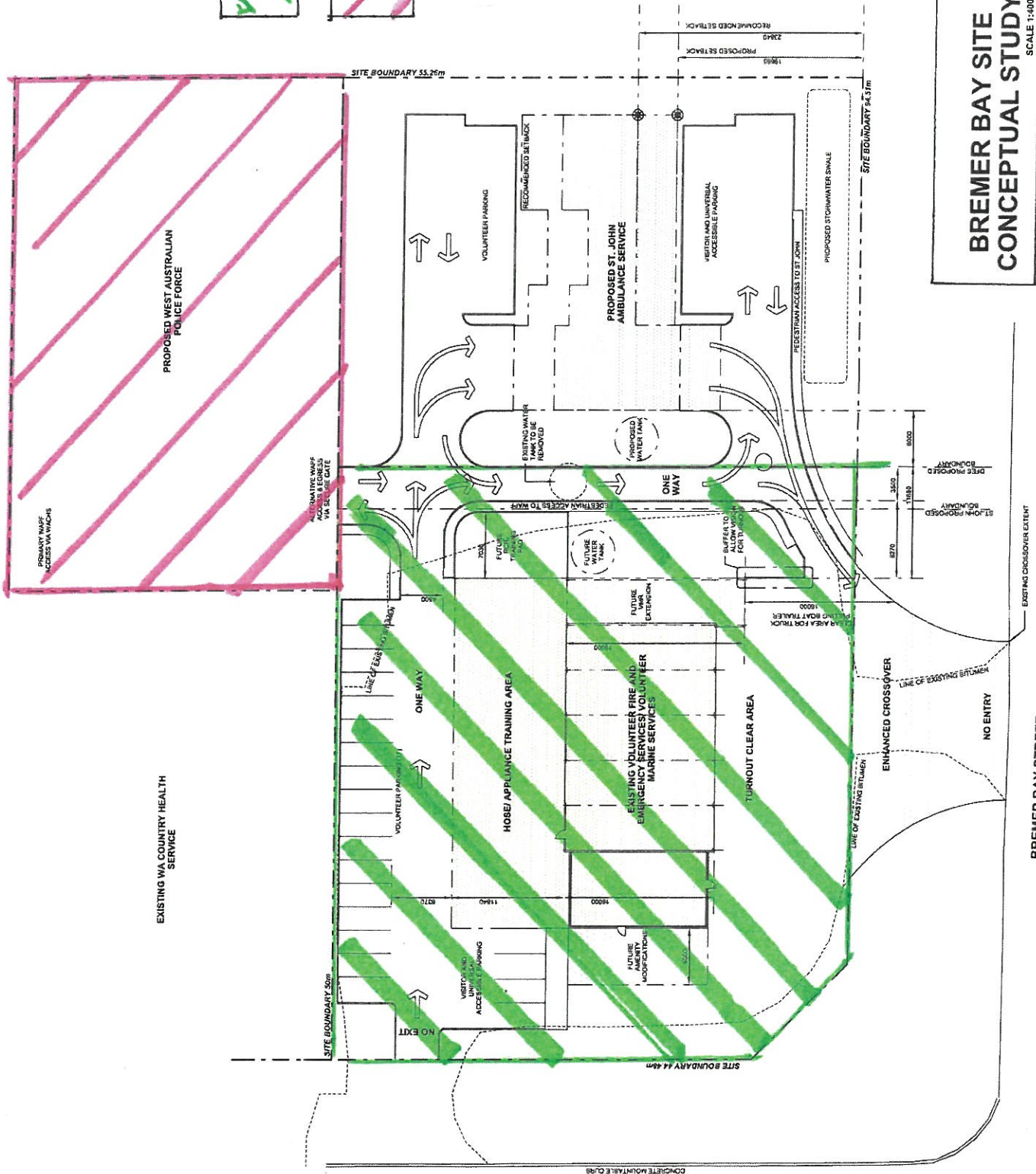
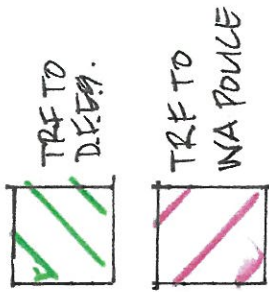
Lot on Plan - Boundaries (256K)

Lot on Plan - Boundaries (64K)

Lot on Plan - Boundaries (16K)

PRIMARY (AND PREFERRED) ACCESS TO WAFFE VIA WACHS

ALTERNATIVE ACCESS TO WAFFE VIA VFRS/VMR SITE



**BREMER BAY SITE
CONCEPTUAL STUDY**

SCALE 1:400

PLAN VFRS MODEL V2-1 16.06.2023

BREMER BAY STREET

JOHN STREET