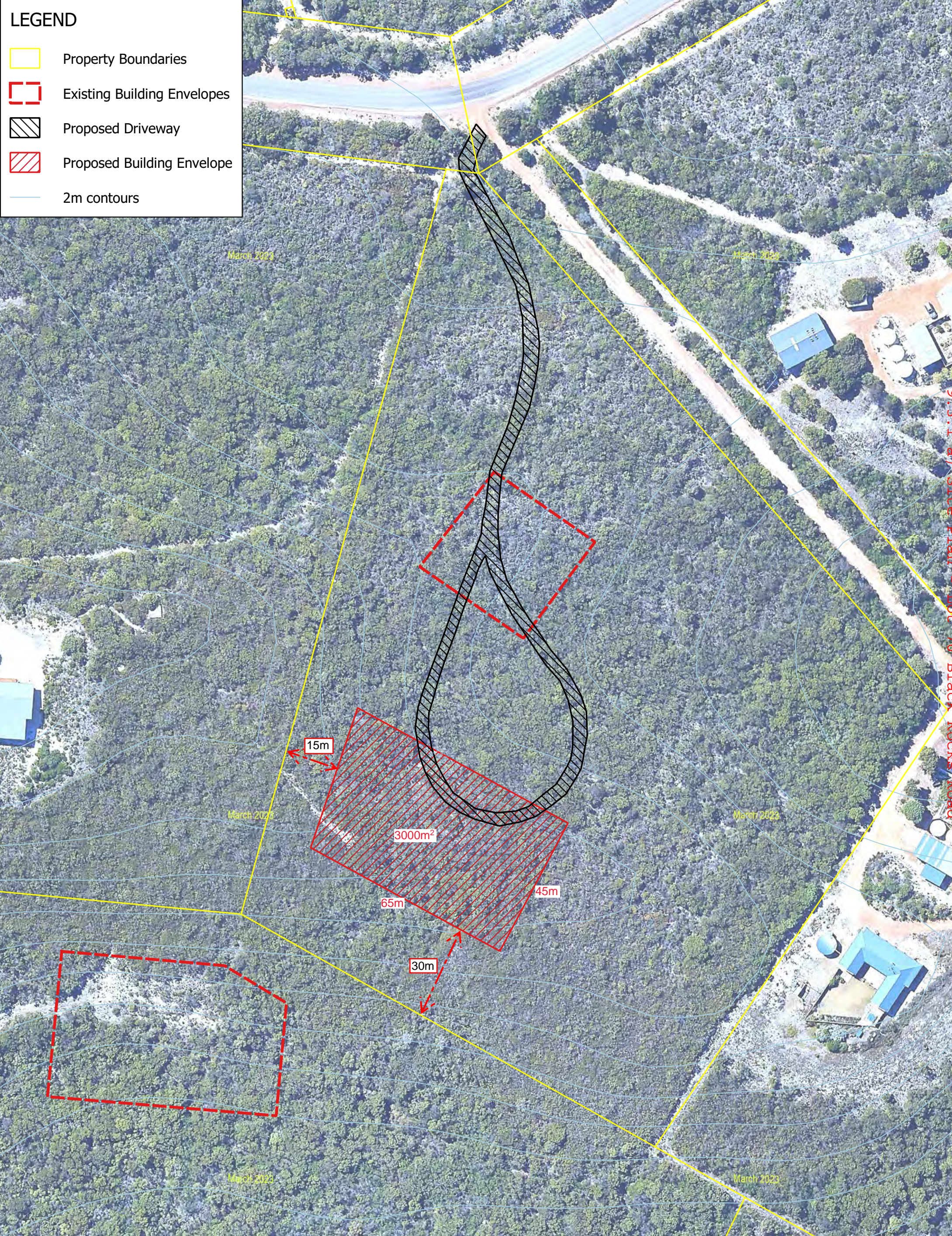


LEGEND

-  Property Boundaries
-  Existing Building Envelopes
-  Proposed Driveway
-  Proposed Building Envelope
-  2m contours



9.3.3.1 a) Site Plan - Lot 76 Black Rocks Road

DISCLAIMER

Craig Pursey Planning Pty/Ltd does not warrant the accuracy in this publication and any person using or relying upon such information does so on the basis that Craig Pursey Planning Pty Ltd shall bear no responsibility or liability whatsoever for any errors, faults, defects or omissions in the information



SCALE 1 : 1000	
SHEET 2 of 2	SIZE A3
DATE 07/03/2024	

Proposed Building Envelope and Driveway

Lot 76 Black Rocks Rod, Bremer Bay